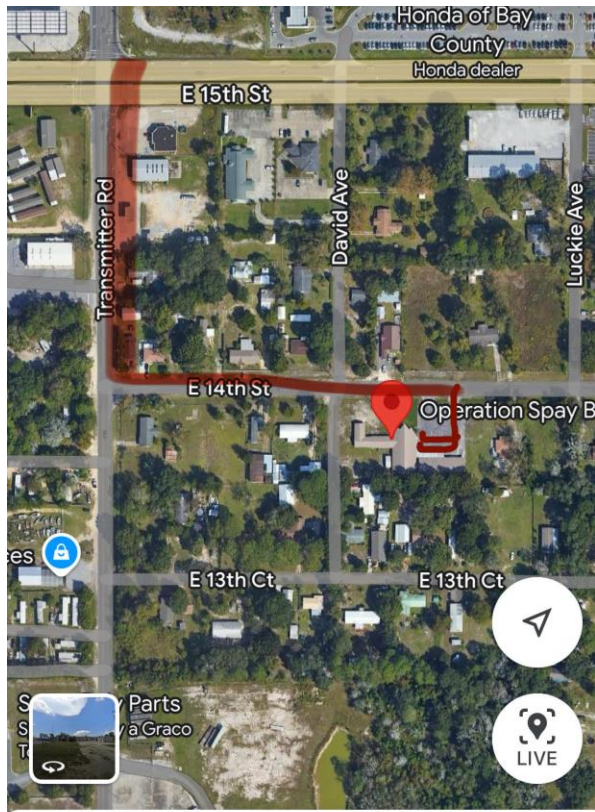


Operation Spay Bay Transport Instructions

- ☐ To be eligible for surgery, cats should be 3 months or older/3 pounds or heavier. Surgery will be cancelled if the cat shows any sign of respiratory sickness: wheezing, sneezing, nasal discharge, or eye redness or discharge. However, if the cat needs treatment, this is often the easiest and fastest way to get them treated but they will have to return another day for surgery.
- ☐ If you live within the city limits of PCB and want to obtain a voucher to cover costs, stop by city hall at 17007 PCB Parkway M-F 7:30am to 4:00 pm with ID to obtain up to five vouchers per residence.
- ☐ Please offer water to the cat until you transport to the clinic.
- ☐ If the cat is over 5 months they should not have food after midnight. Any cats younger than this should have food available until 6:00 am the day of surgery.
- ☐ If cats are in traps please keep them covered at all times to reduce stress.
- ☐ More than one cat can be delivered to the clinic in the same trap or carrier, but each cat must have its own for recovery, so you must deliver extra empty carriers or traps for after surgery if they are not separated already. Spay bay has cardboard carriers for purchase but they are not very secure- use at your own risk. No soft sided carriers please.
- ☐ Drop off at the time requested by the clinic. Follow the map below for drop off and pick up. The line will form on 14th street. Vouchers, cash and credit cards accepted and payment must be made at drop off.
- ☐ Paperwork will be provided. Please check the boxes at the bottom of the paperwork for **rabies vaccine, cat distemper vaccine and cat ear tip for the \$50 community cat package**. Additional services can be added at minimal costs.
- ☐ If possible, please be available by phone in case the clinic needs to reach you. They call infrequently but if they need to, it is likely to have you authorize additional testing or intervention that they might recommend. If you miss their call and call the clinic back-know that they are very busy and may not answer your call.
- ☐ Pick up is between 3:30-4:30, again carside in the same traffic pattern, with no admittance to the line before 3:30. Clinic staff will review any special surgical findings and discharge instructions. Please pay for anything extra at this time and ask any questions you have. Rabies tag numbers are provided on the paperwork; if you'd like a physical tag you can request it. Discharge instructions will include a number for the nurse hotline- this is a great resource if you have concerns. Often you'll need to leave a voicemail but they do return calls.
- ☐ This is going to be a stressful, hectic day for you and the cat. Drop off and pick up can be chaotic with long waits. Check your invoices for accuracy and traps/carriers to assure doors are securely closed. Please print or keep these instructions readily available for your reference. Take a moment and acknowledge your contribution- you have greatly enhanced this cat's quality of life!



Operation Spay Bay